

ChipIntelli
成都启英泰伦科技有限公司
Chipintelli Technology Co.,Ltd.

Name : CI1324X low power reference design

Features: CI1324X, single-mic differential inpt, voice prompt output

Application: gernal

More info: <https://document.chipintelli.com>

Release date:

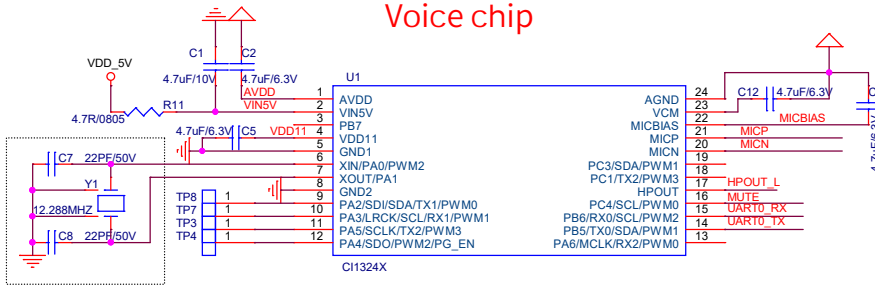
Note: It is important that during both the application design and design verification stages, customers carefully read the application notes and design considerations provided in the reference design schematics, and maintain close communication with our FAE team.

ChipIntelli 成都启英泰伦科技有限公司 Chipintelli Technology Co., Ltd.		
Title : Front Cover		
Size B	Document Number <Doc>	Rev 1.3
Date:	Friday, July 05, 2024	Sheet 1 of 3

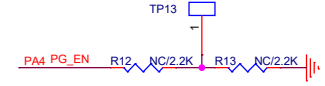
版本	修改记录	作者
V1.0	初版	启英泰伦

Title : Revision History		
Size A	Document Number <Doc>	Rev 1.0
Date: Tuesday, July 02, 2024		Sheet 2 of 3

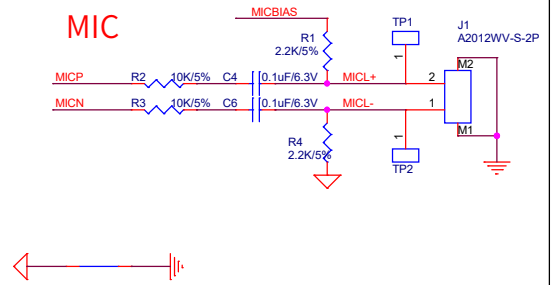
Voice chip



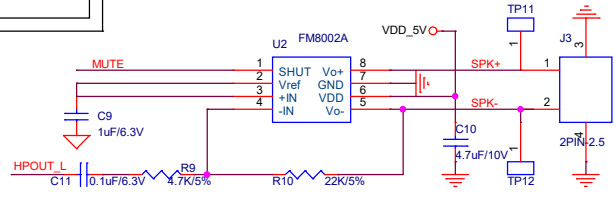
R5	R6	Description
NC	NC	By default, the device enters upgrade mode upon power up, with a startup time of approximately 650 ms. Making it suitable for products where power-on time is not a critical concern.
2.2K	2.2K	The device powers on in normal operation mode with a startup time of approximately 250 ms. By shorting the test points before power-up, it can enter upgrade mode. Suitable for products requiring fast startup.



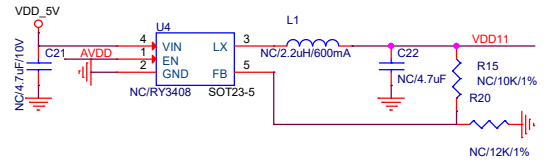
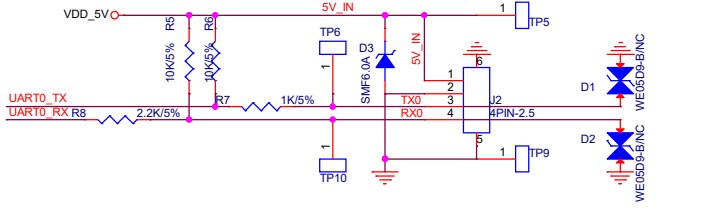
MIC



Class AB Amplifier



Power & UART



External DCDC

CI1324X Low power reference design

Title : Typical application			
Size	Document Number		Rev
Custom	<Doc>		1.0
Date:	Thursday, July 25, 2024	Sheet	3 of 3