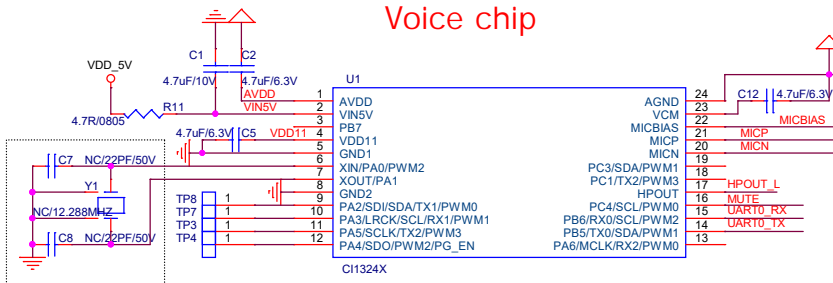
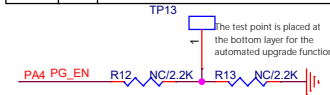


Voice chip

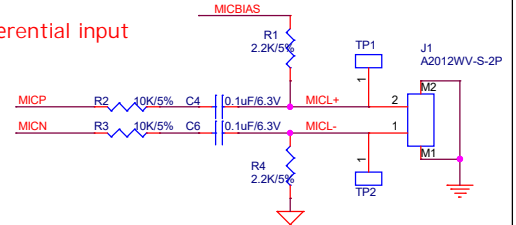


R5	R6	Description
NC	NC	Default upgrade mode on power-up, boot time: 850 ms. Suitable for products without strict power-on timing requirements.
2.2K	2.2K	Normal operation mode on power-up, boot time: 350 ms. Short the test pads during power-up to enter upgrade mode. Intended for products with strict power-on timing requirements.

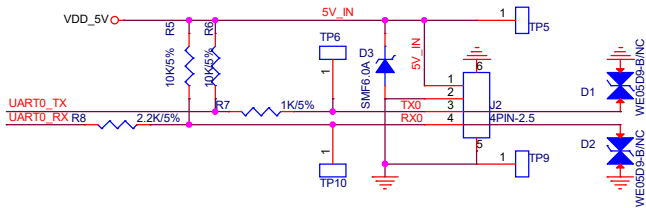


MIC

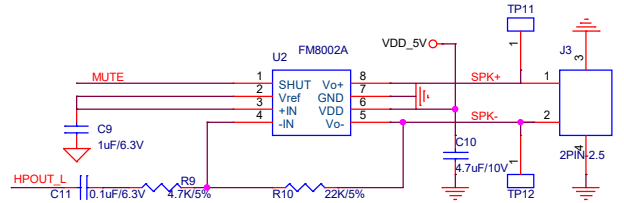
differential input



Power supply & serial port circuit



Class AB amplifier



CI1324X typical application scheme reference design

ChipIntelli 芯智启英睿达科技有限公司 ChipIntelli Technology Co., Ltd.		
Title : Typical application		
Size	Document Number	Rev
Custom	<Doc>	1.0
Date:	Thursday, July 25, 2024	Sheet 3 of 3