

**ChipIntelli**  
成都启英泰伦科技有限公司  
Chipintelli Technology Co.,Ltd.

Name : CI1324X High reliability reference design

Features: CI1324X single-mic differential input, voice prompt output

Application: Suitable for products with requirement on single-mic differential input , voice prompt output

More info: <https://document.chipintelli.com>

Release date:

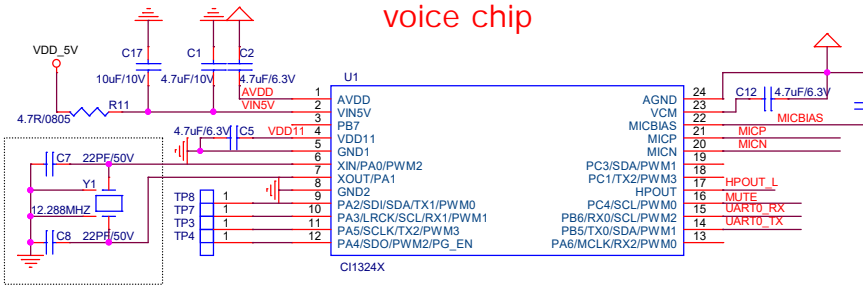
Note: It is important that during both the application design and design verification stages, customers carefully read the application notes and design considerations provided in the reference design schematics, and maintain close communication with our FAE team.

<b>ChipIntelli</b> 成都启英泰伦科技有限公司 Chipintelli Technology Co.,Ltd.		
Title : Front Cover		
Size B	Document Number <Doc>	Rev 1.3
Date: Tuesday, July 02, 2024	Sheet 1	of 3

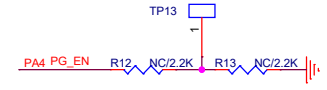
版本	修改记录	作者
V1.0	初版	启英泰伦

Title : Revision History		
Size A	Document Number <Doc>	Rev 1.0
Date: Tuesday, July 02, 2024		Sheet 2 of 3

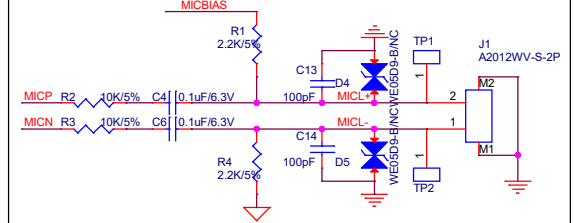
## voice chip



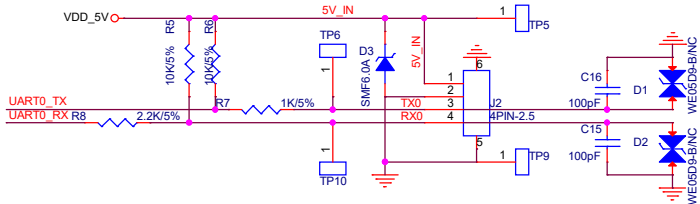
R5	R6	Description
NC	NC	By default, the device enters upgrade mode upon power-up, with a startup time of approximately 850 ms, making it suitable for products where power-on time is not a critical concern.
2.2K	2.2K	The device powers on its normal operation mode with a startup time of approximately 350 ms. By shorting the test points before power-up, it can enter upgrade mode. Suitable for products requiring fast startup.



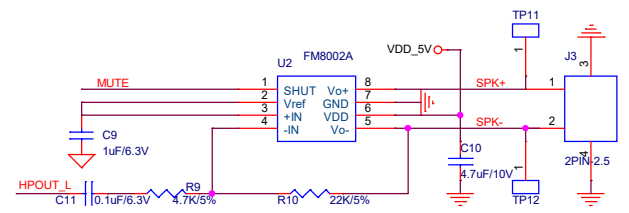
## MIC



## Power&UART



## Class AB Amplifier



## CI1324X high reliability reference design

**ChipIntelli** 芯聯超集電科有限公司  
ChipIntelli Technology Co., Ltd.

Title : Typical application		
Size Custom	Document Number <Doc>	Rev 1.0
Date: Thursday, August 15, 2024	Sheet 3	of 3