



Name: CI1332X High reliability reference design

Features: CI1332X single-mic differential input, voice prompt output

Applications: Suitable for products with requirement on single-mic differential input, voice prompt output

More info: <https://document.chipintelli.com>

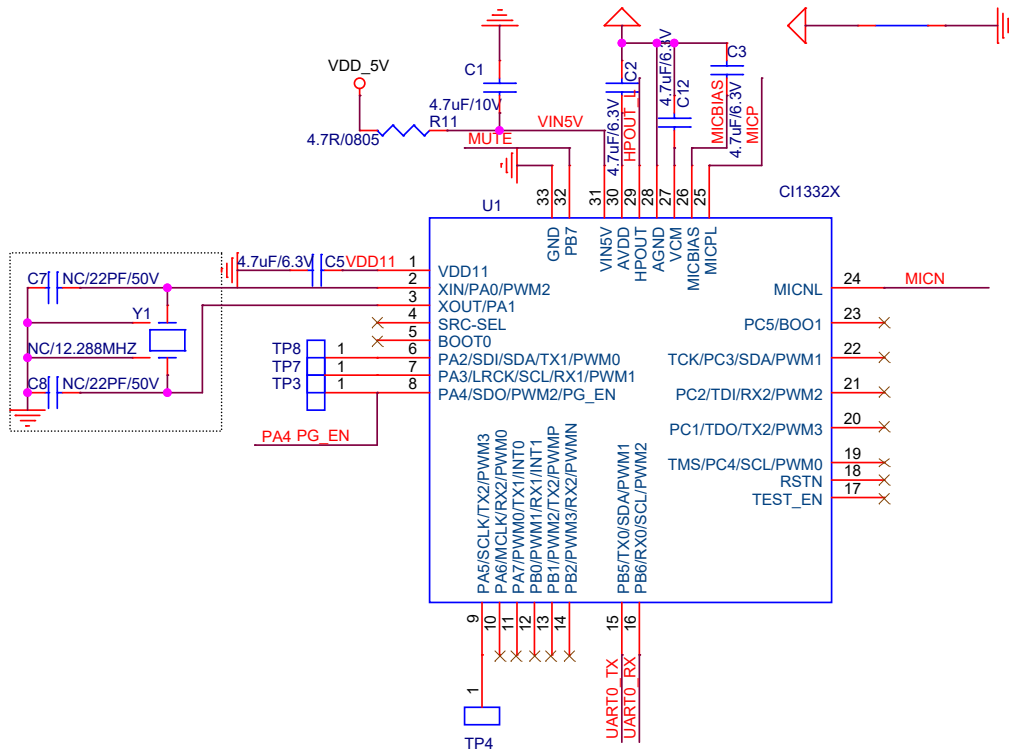
Release date:

Note: It is important that during both the application design and design verification stages, customers carefully read the application notes and design considerations provided in the reference design schematics, and maintain close communication with our FAE team.

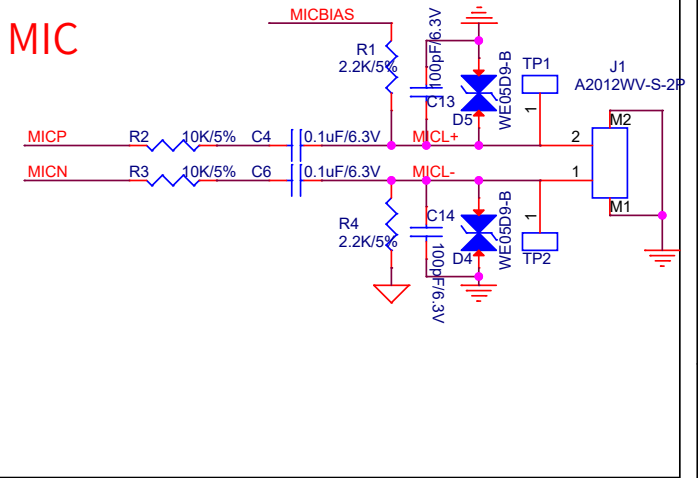
| | | |
|--|-----------------------------|--------------|
|  成都启英泰伦科技有限公司 Chipintelli Technology Co., Ltd. | | |
| Title : Front Cover | | |
| Size B | Document Number <Doc> | Rev 1.3 |
| Date: | Wednesday, October 16, 2024 | Sheet 1 of 3 |

| 版本 | 修改记录 | 作者 |
|------|------|------|
| V1.0 | 初版 | 启英泰伦 |
| | | |
| | | |
| | | |
| | | |

voice chip

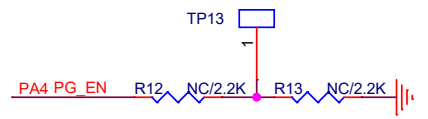


MIC

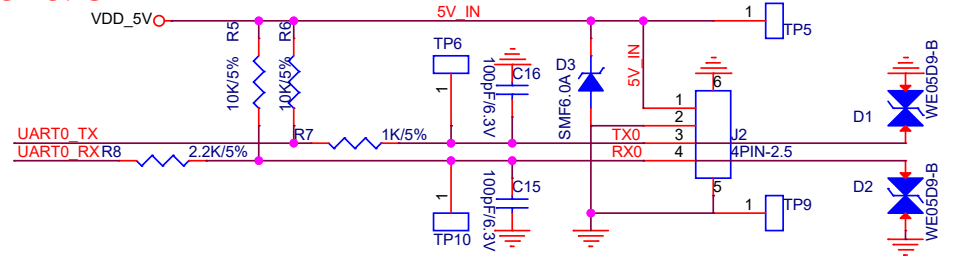


Upgrade Enable

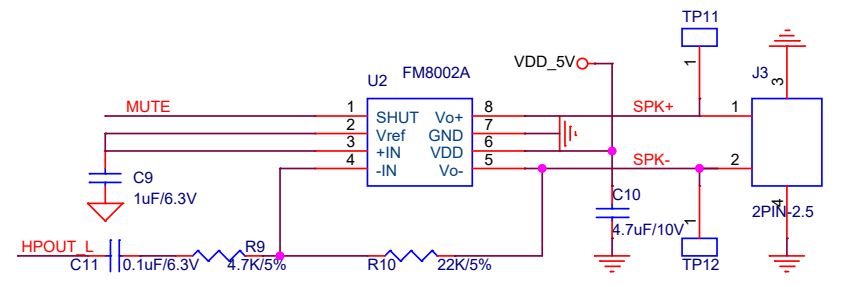
| R12 | R13 | 说明 |
|------|------|--|
| NC | NC | 上电默认升级模式，开机时间约850ms 适用于对上电时间要求不高的产品 |
| 2.2K | 2.2K | 上电正常工作模式，开机时间约350ms， 短接测试点后上电可以进入升级模式 适用于对上电时间有要求的产品 |



Power & UART



Class AB amplifier



CI1332X High reliability reference design